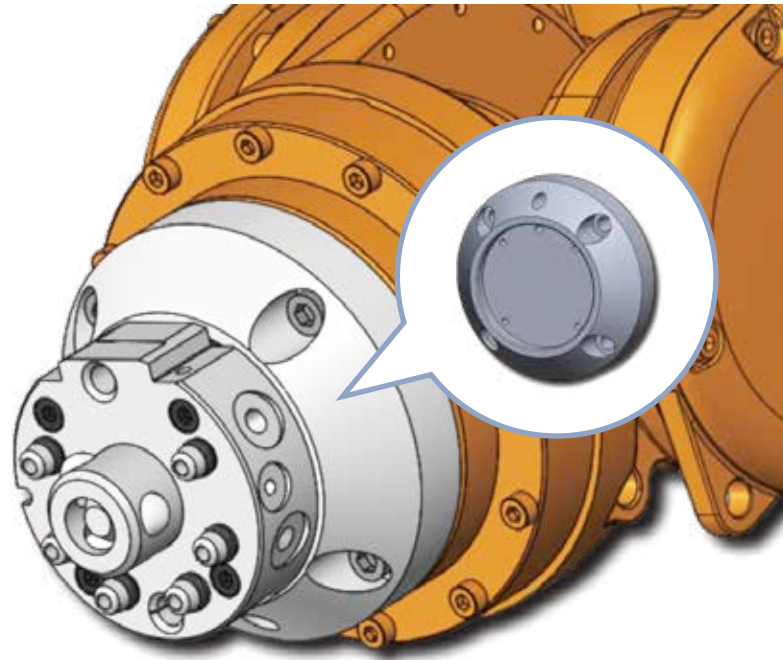


NEW!

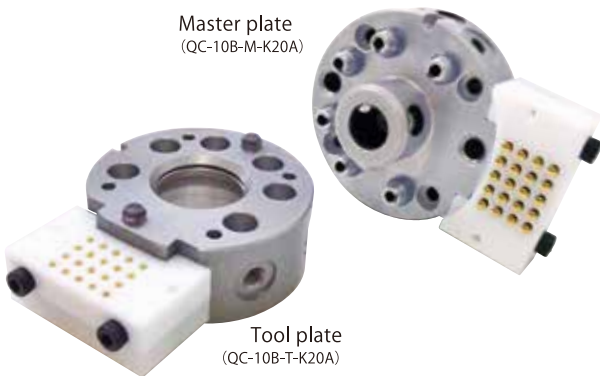
Robot Interface Plate for **QC-10B**

Easy to install!

Useful for simple design!



Master plate
(QC-10B-M-K20A)

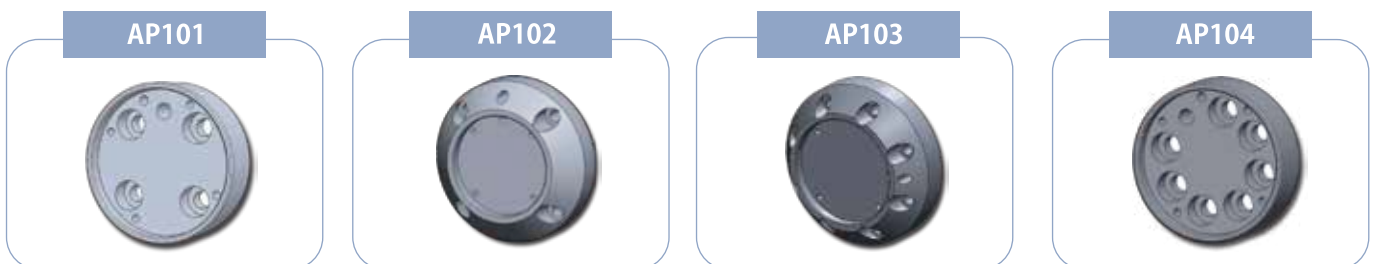


Tool plate
(QC-10B-T-K20A)

QC-10B Main body Specifications

Load capacity (rated load)	98N (10kg)	
Positional repeatability ※1	±0.01mm	
Allowable dynamic moment	Bending direction (Tx, Ty)	49N·m (500kgf·cm)
	Twisting direction (Tz)	68.6N·m (700kgf·cm)
Coupling force (with air pressure of 0.49MPa) ※2	970.8N (99kgf)	
Materials	Master plate	Stainless steel
	Tool plate	Aluminum alloy (The lock/unlock mechanism is stainless steel)
Overall dimension (when coupled)	φ50×H38.5mm	
Weight (Main body)	Master plate	245g
	Tool plate	85g
Self-separating mechanism	Ball-locking mechanism	
Required air pressure	0.39~0.68MPa (4~7kgf/cm ²)	
Allowable temperature and humidity ranges	0~50°C, 35~90% (Non-condensing)	
Utilities	Pneumatic ports	M5×6

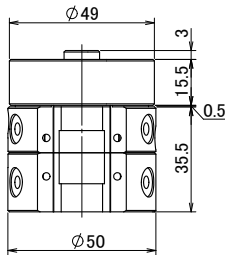
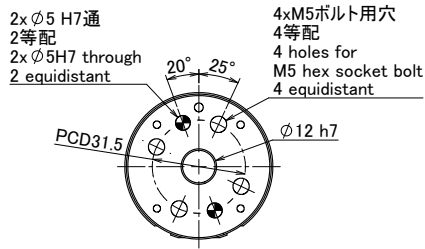
Line up



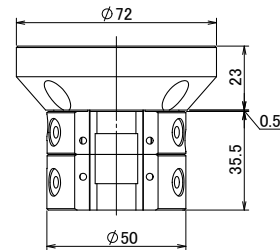
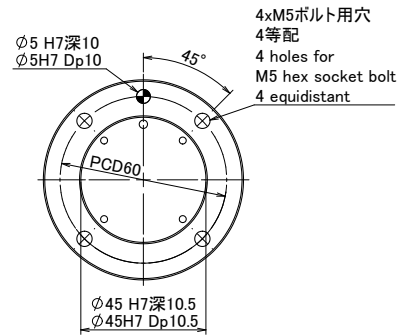
Robot Interface Plate Specifications

Type	AP101	AP102	AP103	AP104
PCD	31.5	60	56	31.5
Bolt size	M5	M5	M4	M5
Hole for locating pin	2× φ5H7	φ5H7	2× φ4H7	φ5H7
Boss size	φ12h7	φ45H7	φ62H7	φ20h7
Boss Height or Depth	Height 3mm	Depth 10.5mm	Depth 8mm	Height 3mm
Accessories (Bolts and pin)	M5×10 (4 pcs) MSY5-15 (1 pc)	M5×15 (4 pcs) MSY5-15 (1 pc)	M5×10 (4 pcs) MSY4-15 (1 pc)	M5×10 (7 pcs) MSY5-15 (1 pc)
Weight (Including bolts and pins)	71g	68g	130g	79g (Bolts 7pcs) 68g (Bolts 7pcs)

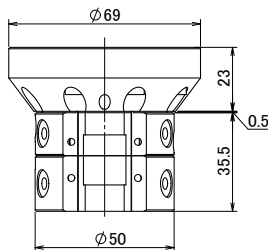
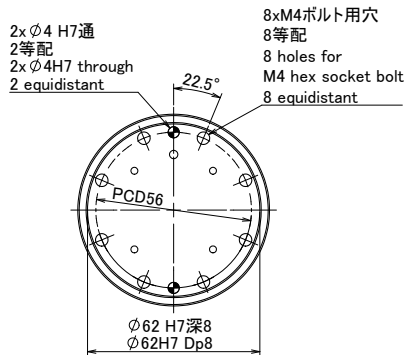
AP101



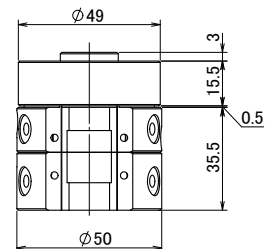
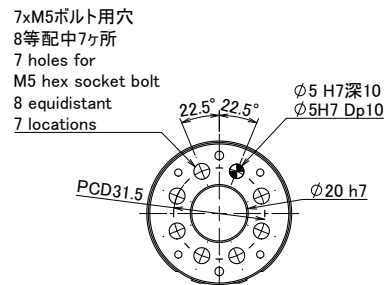
AP102



AP103



AP104



※On installing AP101,102, and 103: on robots and AP104 on master plate,
all 4 plates are invertible by 180°